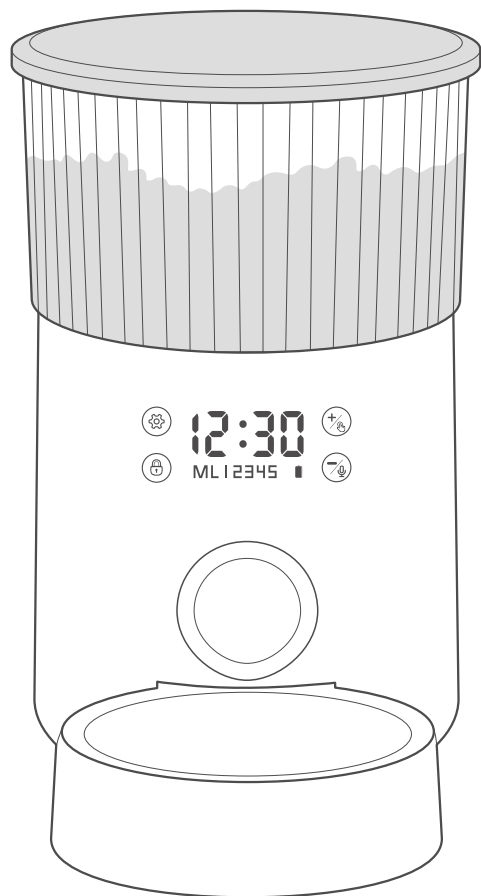


# A80

## A80 AUTOMATIC PET FEEDER (Touch Screen)



**User Manual**

## Specification

**Programming:** 1 to 40 portions (5g~200g); 1 to 5 meals per day

**Product Weight:** 1.5kg (Without batteries and food)

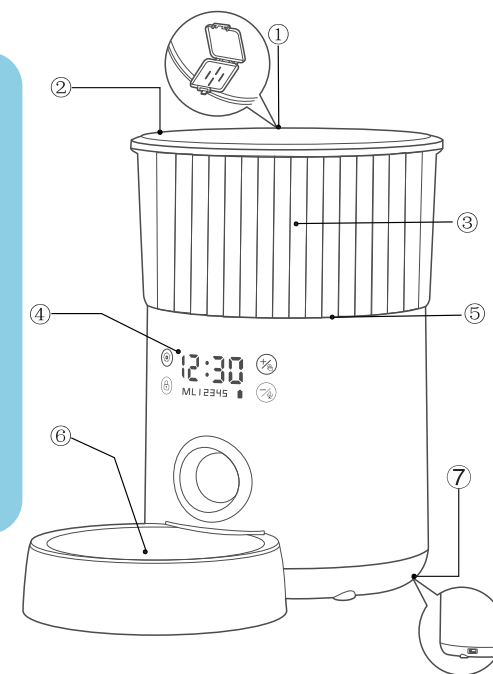
**Product Dimensions:** L206mm x W341mm x H321mm

**Capacity:** 4L (dry food only)

**Dual Power Supply:** Output DC power adapter; 5V,1A ; 3 “D” size batteries  
(recommended alkaline battery , not included) for backup

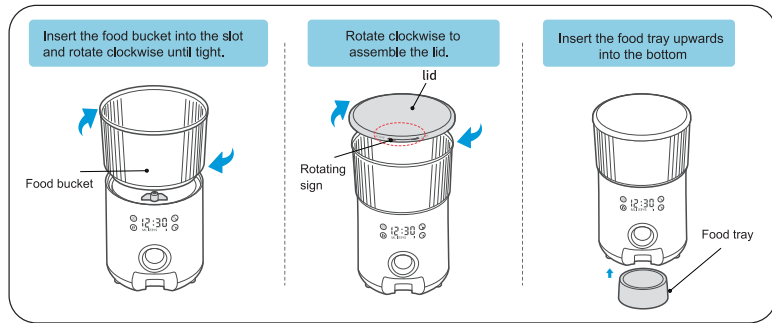
## Product Features

- ① Desiccant pouch holder, to keep kibbles dry and fresh.
- ② Rotating Lid, to protect kibbles pour-out.
- ③ Transparent bucket, to check kibbles through tank easily.
- ④ Touch panel, to set up easily
- ⑤ Disassemble Design , to operate and clean easily.
- ⑥ 304 stainless steel food bowl, to clean easily.
- ⑦ Dual power supply, to avoid sudden power breakout.

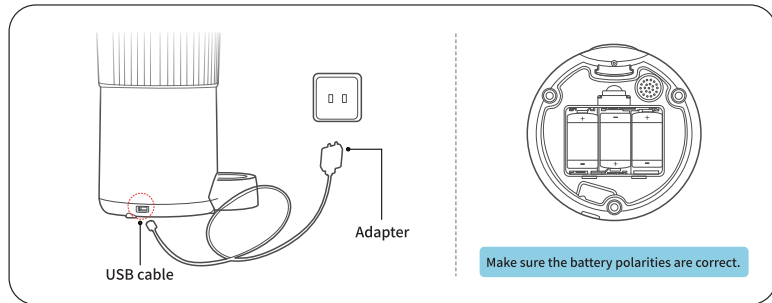


# Assemble Guidelines

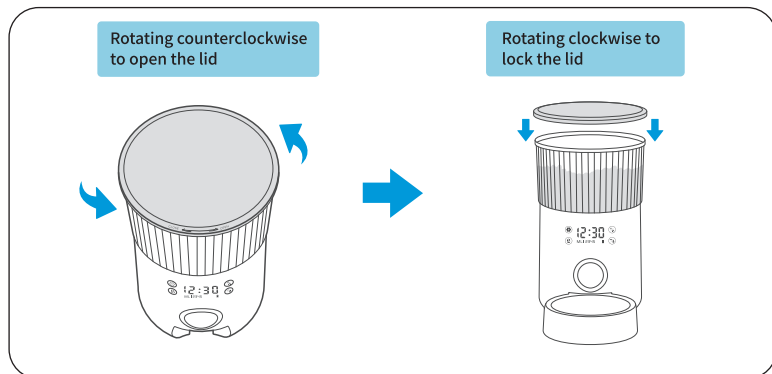
(1) Assemble the food bucket; lid and food tray as shown in below pictures;



(2) Dual power supply. Connect the feeder with USB cable and power adapter as below picture; or be powered by 3 "D" size batteries (recommend to use alkaline batteries). You are recommended to install 3 "D" size batteries in case of sudden power breakout or power adapter failure.



(3) Open the lid as below picture shown and lock it well when it has food.



## Setting

- Long press: Setting status.
- Short press: Confirmed or for next step

## Time

- (Standby state): Current time
- (Setting state): Setting current time first and then setting the feeding time of each meal

## Value adjustment (increase) or manual feeding button

- (Standby status) short press: Manual feeding
- (Setting status) short press: Increase value
- (Setting status) Long press: Increase the value quickly



## Lock Button

- Long press: Unlock (hear two beeps); Locked (hear a long beep)
- Short press: Back to step;
- The screen will be locked automatically without operating for 3 minutes.

## Value adjustment (Decrease) or record and playback button

- Standby status) long press: Record or cancel recording
- (Setting status) short press: Decrease value
- (Setting status) Long press: decrease the value quickly

## Number of meals

- Setting status: the digit flashing
- Not feeding: the number of meal will not show

## Battery indicator

- No indicator light: sufficient battery power
- Indicator light flashing: without battery
- Indicator light flashing interval: the battery is in low level.
- Indicator light flashing twice: need replace new battery

**Note:** To clear all setting, restore the factory setting:

Make sure the screen is unlocked. Long press the set button and the manual feed button for 2 seconds until hearing beeps.

# Setting Guidelines

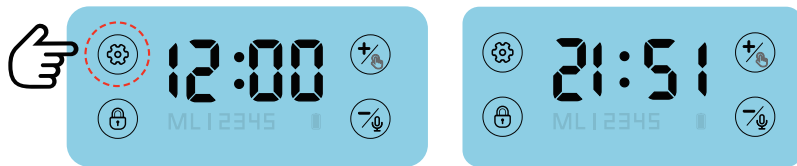
## (1) Testing before use

- Plug in and switch on the feeder.
- Short press the manual feed button, the feeder will instantly rotate one portion. Repeat this step for 3 times to make sure the feeder work normal.

## (2) Set the current time

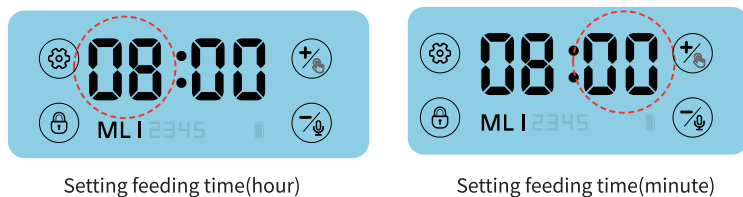
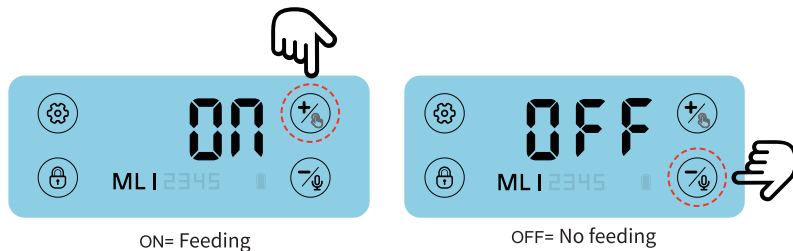
- Long press the set button, the hour digits will flash. Press increase /decrease value button to set the current hour and then short press the set button again to save. Repeat the step to set the minutes.

Below pictures are the example: the current time is 21:51.



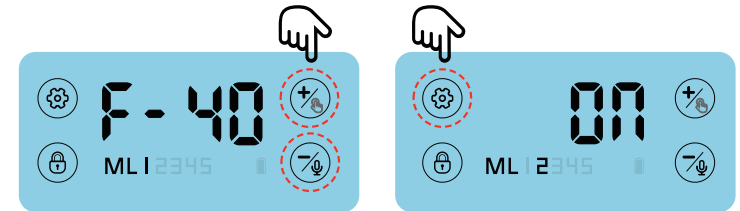
## (3) Setting the first meal time

- Once the current time saved, the feeder will enter meal time setting mode. The “1” meal icon next to “ML” starts flashing, press the increase/decrease button to set “ON” or “OFF”. “ON” means feeding; “OFF” means no feeding.
- If you set “ON” for 1st meal, Next Step: setting meal time.



- Once the feeding time is set and saved, the feeder will enter meal portion mode. The screen will display “F-XX” (XX means the portions). Short press set button, press increase/decrease button to set the portions and then press set button again to save. Repeat the same step to set 2; 3; 4; 5 meals. Short press set button to save once you set all meals.

(Note: In setting mode, short press the lock button back to previous setting. Long press set button to exit setting mode.)



F-40 means feeding with 40 portions

The second meal feeding setting

## (4) Set recording and playback

### • Start recording

In standby state, press and hold the decrease/recording button until you hear a beep and continue to hold while recording up a 30 seconds message. Release the button when you hear a beep to finish recording. Your recorded message will play for review.

### • Play the recording

Press the decrease/recording button to hear your recorded message.

### • Cancel recording

Long press the decrease/recording button in silence until you hear a beep and release the button immediately to cancel the recording.



## (5) Lock and unlock button

Long press the lock button to hear a long beep to lock the screen.

Long press the lock button again to hear beeps twice, the screen is unlocked.

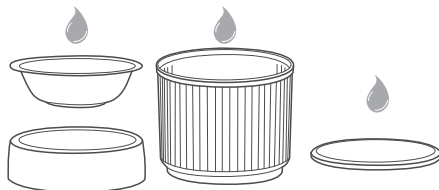


# Important Notes

## (1) Cleaning and maintenance

- Turn off the power and unplug the adapter before cleaning.
- The food tray; food buckets and lid can be moved for washing with soft cloth.
- To avoid water submerge the main unit when you clean it with a damp cloth.

(Warning: Do not submerge the main unit in water as this will damage the electronic components and void the warranty.)



Food bowl, stainless steel bowl ,  
food bucket and lid can be washed



**Warning:** The main unit can  
not be washed

## (2) FAQs Answer

### • Battery indicator

Indicator light flashing means no battery

Indicator light flashing interval means the battery is in low level.

Indicator light flashing twice means it need replace new batteries. The feeder doesn't work if you only use battery.

### • Abnormal conditions

The screen interval shows “E-01”: Means the feeder is jamed by food and need remove the jamed food or clean the food outlet.

The screen interval shows “E-02”: Means the motor doesn't work normally. Please check if the motor is running.

### • Automatic LED screen off

The screen will turn off automatically without operating for 3 minutes. The LED screen will light up but still keep lock when you touch any button of them. Long press lock button to unlock buttons.

## Warning

- Do not put your fingers into the food outlet or let your fingers touch the rotor of the motor.
- This product is required to use 3 “D” size batteries.  
Note: Batteries should be removed from the device if it's not used for a long period of time to avoid damage through leaking.
- This unit is required for dry food only.  
If you have any questions, please contact the dealer or manufacture.