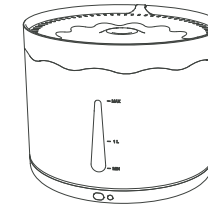


User Guide for TWT Drinking Fountain



Please read this user guide before using the product and keep it for future reference.

Safety Precautions

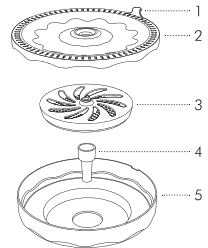
! Warning

- Dispose of all packaging materials properly. Some items may be packed in polybags; these bags could cause suffocation; keep away from children and pets.
- Do NOT allow small children to play with, in or around the pet water fountain.
- To reduce the risk of injury, please keep close supervision when an appliance is used near children.
- Do NOT use the water fountain with pets not able to reach the water tray or with any physical disability.
- Do NOT immerse the base part in water at any time as it may damage electronic components inside.
- Do NOT place any foreign object in the water tank.
- Do NOT use outdoors. Check operation frequently to be sure the unit is dispensing properly.
- Do NOT disassemble the unit other than as instructed in this User Guide.
- Do NOT use the pet water fountain for anything other than its intended use.
- Only use attachments recommended or sold by the manufacturer. The use of attachments not recommended or sold by the manufacturer may cause an unsafe condition. Do NOT modify the pet water fountain.
- Do NOT operate any appliance if the unit is malfunctioning or has been damaged. Do not attempt repairs on the device yourself. Contact our customer service immediately for further instructions.
- Always unplug when not in use and before cleaning the base with a moist cloth.
- Never pull on the electrical power cord to remove the plug from the wall outlet.
- If the plug of this device gets wet, turn off electricity to that wall outlet. Do NOT attempt to unplug.
- Examine the device after installation. Do NOT plug in if there is water on the contact points or plug.
- To avoid tripping, always position power cord out of the way of foot traffic.
- Do not let pump run dry.
- Do not use in a bathroom.
- Change the filter every 1-2 months or when flow rate has noticeably reduced. For two or more cats, you may need to replace the filter cartridge more regularly if it becomes blocked.

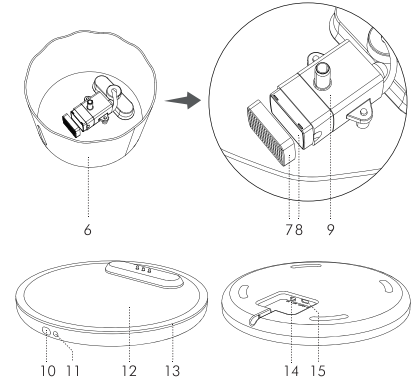
Caution

- Do NOT allow pets to chew on or swallow any parts. If you are concerned about the power cord, purchase a cord conduit (a hard-plastic protector) at any hardware store to protect the power cord.
- If an extension cord is necessary, one unit with a proper rating should be used.
- Do NOT install or store the pet water fountain where it will be exposed to weather or temperatures below 4°C / 40°F.
- Do NOT lift the pet water fountain by water tray or filter tray. Lift and carry it by the base, while keeping the unit in an upright position.
- Read and observe all important notices listed on the pet water fountain and in the packaging.

Product Diagram



- 1) Water Tray Tab
- 2) Water Tray
- 3) Filter
- 4) Intake Tube
- 5) Filter Tray



- 6) Water Tank
- 7) Pump Cover
- 8) Sponge
- 9) Pump
- 10) Photosensor
- 11) LED Indicator*
- 12) Base
- 13) Night Light
- 14) Night Light Switch
- 15) USB Supply Port

* The LED indications are as follows:

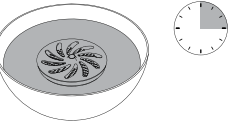
Solid green	Under normal working condition
Blinking green	Low water level (below MIN level)
Off	Water fountain power off

How To Use

Remove packing tapes on the parts before use.

Step 1

Soak the filter for 15 minutes in a clean bowl with water.

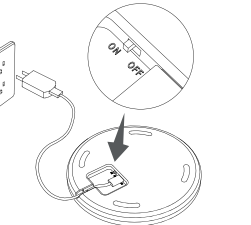


Note:

- 1) Make sure the filter is fully soaked before the water fountain is turned on; otherwise water may not be dispersed through the filter smoothly and spill out.
- 2) Do not soak the filter in the water tank of the water fountain in case of any surface dust.

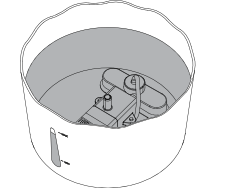
Step 2

Connect the base to a power supply with Micro USB cable included. You may turn on the night light by the Night Light Switch; the photosensor will automatically detect the light and night light will be turned on automatically in the darkness.



Step 3

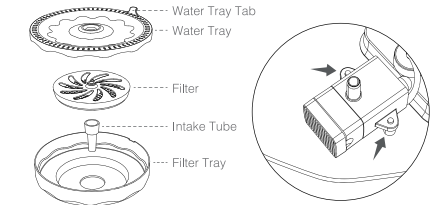
Fill in water tank with purified water till up to MAX level.



Note: Do NOT fill in above MAX level in case of spillages.

Step 4

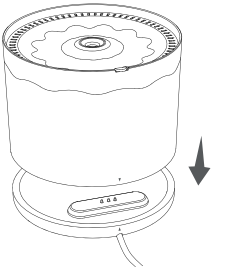
Install the 4 filter parts in sequence: intake tube, filter, tray filter, and water tray. Swirl the water tray a bit to snap the Water Tray Tab in place.



Note: Make sure the pump is fixed in place by the pillars inside the tank.

Step 5

Place the water tank back onto the base (align triangle position marks on both; make sure contact surfaces are wiped dry).



Note: The LED indicator will stay solid green when the water fountain is connected to power and works normally.

Now your pet can drink the bubbles from the middle of the water tray!

Maintenance & Care

Daily Cleaning

It's recommended to detach and clean the water tray, filter tray, water tank and intake tube, and wipe the pump with a clean towel or cloth regularly for the health of your pet. Base is not washable, therefore please wipe clean with a dry cloth or towel.

Replacing the Filter & Sponge in the Pump

Cleaning the pump is essential to prevent the build up of limescale and subsequent pump failure. In hard water areas you may need to do this at least every two weeks. It's recommended to replace the filter and sponge in the pump every 1-2 months. Uninstall the water tray, filter, filter tray, and intake tube in sequence for changing the filter, cleaning the other 3 parts under tap running water. Remove the pump cover, change the sponge inside. Refer to the steps in How to Use for installing the filter parts.

Troubleshooting

Problem	Solution
Water keeps spilling out of the water tray.	The filter may not be soaked fully. Please soak the filter in a clean bowl (not in the water tank) for 15 minutes before the first use.
Why the pump works and then stops now and then?	There's too little water in the tank. Fill in water between MIN and MAX.
How often should I change the filter? Where to get?	It's recommended to replace the filter and sponge in the pump every 1-2 months. Please contact customer service.
Pump does not pump water or 'gurgles'.	When switching on for the first time or after cleaning etc., wait a few minutes for pump to dispel trapped air. If pump still fails to pump water, dismantle the pump cover, replace the sponge, and rinse the pump inside in water to remove any debris.

What's in the Box

- 1 x Water Tank (with pump inside)
- 1 x Filter
- 1 x Water Tray
- 1 x Filter Tray
- 1 x Intake Tube
- 1 x Base
- 1 x USB Cable
- 1 x User Guide Kit

Specifications

Input	DC 5V 500mA
Power Consumption	2W
Material	ABS, PC
Water Tank Capacity	2.2L / 74.4oz
Operating Temperature	-30°C-50°C / -22°F-122°F
External Socket	Micro USB power socket
Dimensions	19 x 19 x 15cm / 7.5 x 7.5 x 5.9in
Net Weight	1.06kg / 2.34lbs

The company maintains the right to interpret the technical indicators of this product without prior notice. For the specification of the product, the company has the right to modify it without prior notice.